

W E L C O M E

IELTS

INTERNATIONAL ENGLISH
LANGUAGE TESTING SYSTEM

MBP

M.B.PATIL

॥विद्या परम भूषणम्॥

ABOUT US

M.B. Patil Education enjoys an outstanding reputation of providing tailored higher education solutions for a well-planned career move within and outside India. With a history of over 18 years, we occupy a special place at the heart of education industry in India.



We understand that its not easy to discover one's true north at a young age. It takes experience, failures, successes, and crucible moments to find what is meant for yourself and vice versa. Our hand-picked team of career counsellors provide personalized mentoring to students to take a soulful dive to find their true passions, and thereafter fearlessly devise a strategic roadmap of college admissions. We endeavor to fulfil every dream but at the same time, to ensure long-term success we develop well-researched options to suit every student's and his/ her family's aspirations and needs.

OUR FOUNDER



Inspired by his own academic journey and accomplishments of gaining India's most competitive and superior qualifications of B.E. E&TC, Indian Engineering Services (IES), Indian Revenue Services (IRS - UPSC), Mr. Manoj Patil founded MB Patil Education to help students to smoothly maneuver through the complexities of the education industry.

He started his career as an academician teaching the students pursuing engineering, but his profound love for crafting career paths, made him enter the field of career counselling. Since 2004, he has strived to assist as many students as possible with his expert guidance and vast knowledge about education trends and top universities.

His decades of experience of counselling more than 40,000 students, helping them to fulfil their academic aspirations, earned him a place in the select pool of India's most successful education consultants. His devotion to helping students curate a career is what sets MB Patil education apart from other institutions.

HAPPINESS IS OUR GREATEST SUCCESS



40,000+

Student Success Stories



80,000+

Course Options



100

Employees



OVERVIEW

What is IELTS?

This test is designed to assess the English language ability of people who intend to study or migrate where English is the language of communication

Test Format

Paper based and Computer based

Test Modules

General Training and Academic

Do's and don'ts.

Tips & strategies to improve your scores



UNIVERSITY OF
CAMBRIDGE

Overview

Test Modules

Academic

Students who wish to go to foreign universities and study.



General Training

People who are applying for the PR to various countries.



Test Format

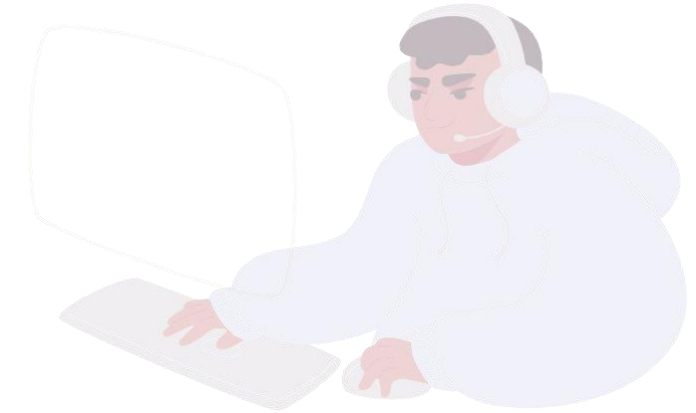
PBT

Paper Based Test



CBT

Computer Based Test



Overview

General Tips & information

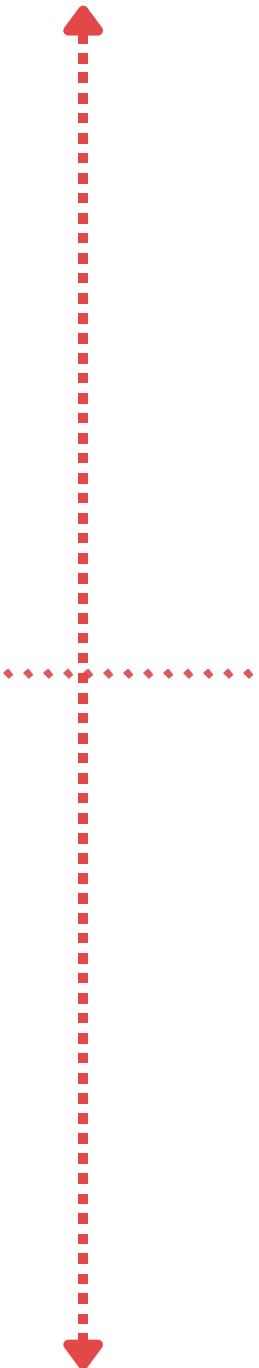
- **Test result is valid for 2 years**
- **A band score is awarded in all four modules**
- **Band score will range from 1-9.**
- **There is no passing or failing marks.**
- **You are graded in each component and the average gives your score.**

Example :

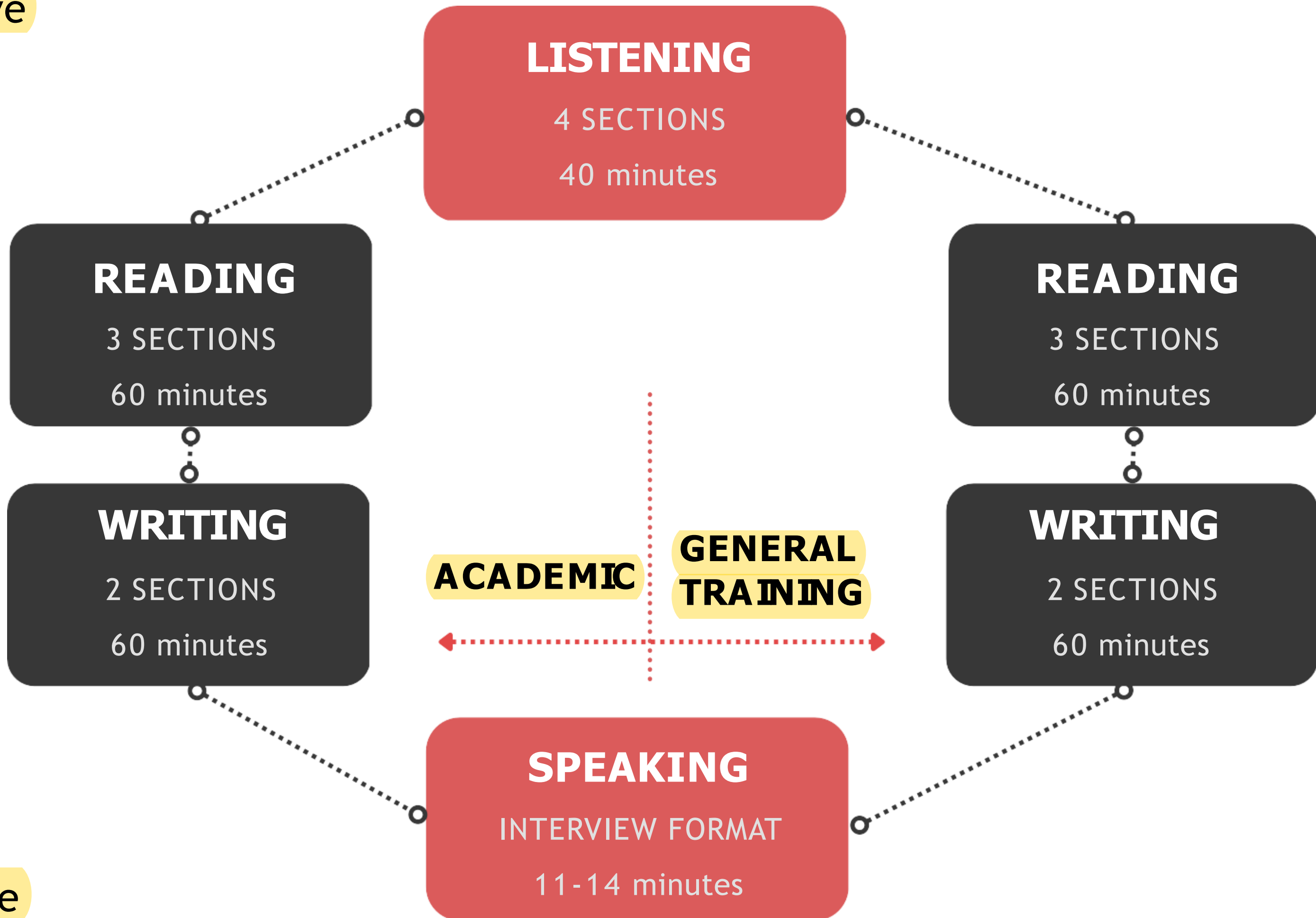
L=6 / R=7 / W=6 / S=7

Overall score= 6.5 bands

Receptive
Skills



Productive
Skills



IELTS BAND SCORE CALCULATOR

Academic Reading		General Reading		Listening	
Score	Correct Answers	Score	Correct Answers	Score	Correct Answers
9	39 - 40	9	40	9	39 - 40
8.5	37 - 38	8.5	39	8.5	37 - 38
8	35 - 36	8	37 - 38	8	35 - 36
7.5	33 - 34	7.5	36	7.5	32 - 34
7	30 - 32	7	34 - 35	7	30 - 31
6.5	27 - 29	6.5	32 - 33	6.5	26 - 29
6	23 - 26	6	30 - 31	6	23 - 25
5.5	19 - 22	5.5	27 - 29	5.5	18 - 22
5	15 - 18	5	23 - 26	5	16 - 17
4.5	13 - 14	4.5	19 - 22	4.5	13 - 15
4	10 - 12	4	15 - 18	4	10 - 12

Equivalency Chart

International English Language Testing System (IELTS) – General Training – Test score equivalency chart

CLB Level	Listening	Reading	Writing	Speaking
10	8.5	8.0	7.5	7.5
9	8.0	7.0	7.0	7.0
8	7.5	6.5	6.5	6.5
7	6.0	6.0	6.0	6.0
6	5.5	5.0	5.5	5.5
5	5.0	4.0	5.0	5.0
4	4.5	3.5	4.0	4.0

Listening

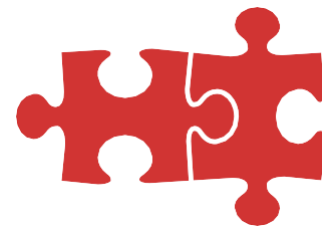
Structure of the Listening Test



Duration of test is 40 mins.



40 questions for 40 marks.



4 sections in this module.



30 mins Audio



No Negative marking

Types of questions:

- **Multiple choice**
- **Matching**
- **Plan/Map**
- **Short Questions - One word answers**
- **Fill in the blanks - Diagram, Flow charts**

General Instructions

Prior Commencement of Test please make sure you :

- Carefully read instructions / Questions
- Test headphones.
- About 30 secs are provided to go through questions before the recording begins.
- Get familiar to the Questions.
- Look out for the key words.
- Read the instructions well about the number of words.

Test Parts

Section 1: Conversation between two people set in everyday social context.

Section 2: monologue set in everyday social context.

Section 3: conversation between 2,3 or 4 people set in an educational or training context.

Section 4: monologue on an academic subject.

Section 1

- This section consists of 10 Questions
- Each question carries one mark.
- No negative marking.
- Questions are designed so that the answers appear in the order they are heard in the audio.

Topic of the Test is always a conversation between 2 people.

Example: A conversation - telephonic or in person about booking a cookery class.

SECTION 1 Questions 1–10

Complete the table below.

Write **ONE WORD AND/OR A NUMBER** for each answer.

COOKERY CLASSES

Cookery Class	Focus	Other Information
<i>Example</i> The Food <i>Studio</i>	how to 1 and cook with seasonal products	<ul style="list-style-type: none">• small classes• also offers 2 classes• clients who return get a 3 discount
Bond's Cookery School	food that is 4	<ul style="list-style-type: none">• includes recipes to strengthen your 5• they have a free 6 every Thursday

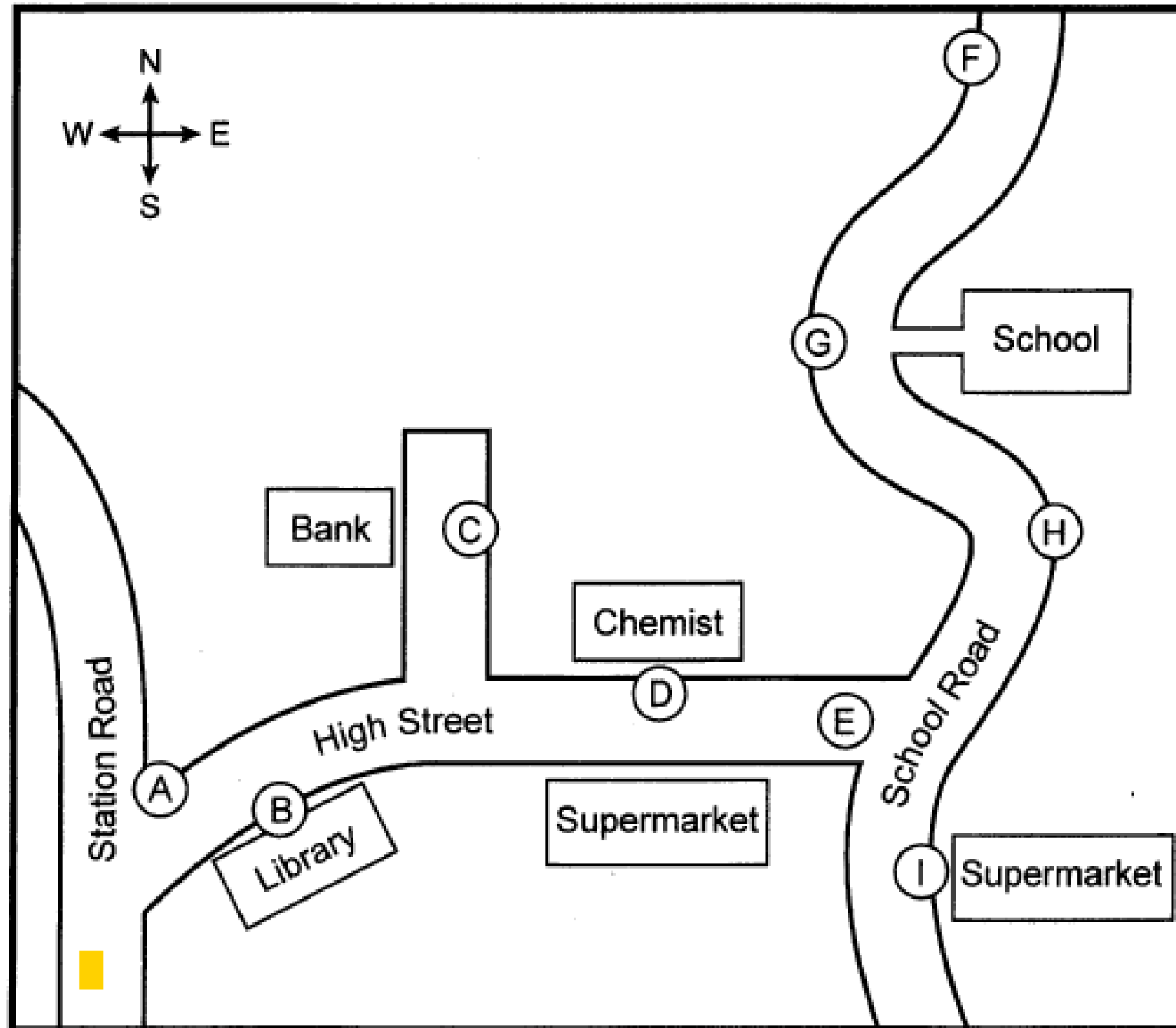
Section 2

- This section consists of 10 Questions.
- 1 mark each.
- Section 2 consists of a Monologue(solo conversation), wherein 1 person is describing a map (of a garden, library or any particular place) and you need to locate a few things on the map.

Label the map below.

Write the correct letter, **A–I**, next to Questions 14–20.

Proposed traffic changes in Granford



- 14 New traffic lights
- 15 Pedestrian crossing
- 16 Parking allowed
- 17 New 'No Parking' sign
- 18 New disabled parking spaces
- 19 Widened pavement
- 20 Lorry loading/unloading restrictions

Section 3

- This section consists of a conversation between a group - 2, 3 or 4 people.
- For example: Conversation between a professor & a student (or) a conversation between 3 students planning research project.
- Topic of the Test is generally based on a campus/ project/ lecture/ research work
- This section is comparatively challenging when compared to other sections.

SECTION 3 Questions 21–30

Questions 21–25

Choose the correct letter, **A**, **B** or **C**.

- 21** Why is Jack interested in investigating seed germination?
- A** He may do a module on a related topic later on.
 - B** He wants to have a career in plant science.
 - C** He is thinking of choosing this topic for his dissertation.
- 22** Jack and Emma agree the main advantage of their present experiment is that it can be
- A** described very easily.
 - B** carried out inside the laboratory.
 - C** completed in the time available.
- 23** What do they decide to check with their tutor?
- A** whether their aim is appropriate
 - B** whether anyone else has chosen this topic
 - C** whether the assignment contributes to their final grade

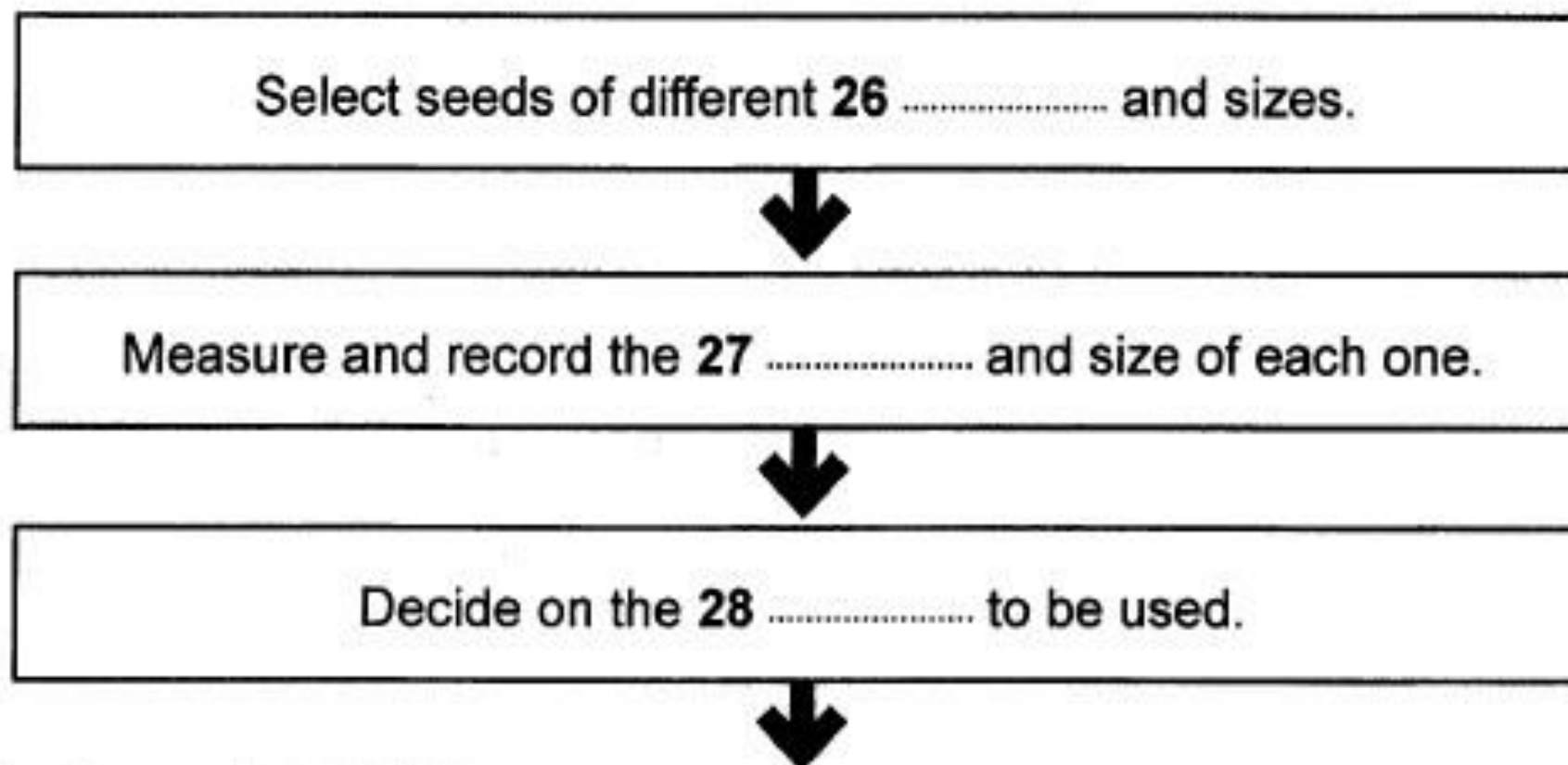
Questions 26–30

Complete the flow-chart below.

Choose **FIVE** answers from the box and write the correct letter, **A–H**, next to Questions 26–30.

A	container	B	soil	C	weight	D	condition
E	height	F	colour	G	types	H	depths

Stages in the experiment



Section 4

- This section consists of a monologue/ lecture.
- It is a lecture or a talk of general academic interest; such as a university lecture on World War (or) Jungle animals, psychology or environment based.
- High amount of attention, concentration is required, when attempting this Section, as detailed information is provided which the candidate is required to note down whilst listening.

SECTION 4 Questions 31–40

Complete the notes below.

Write **ONE WORD ONLY** for each answer.

Effects of urban environments on animals

Introduction

Recent urban developments represent massive environmental changes. It was previously thought that only a few animals were suitable for city life, e.g.

- the 31 – because of its general adaptability
- the pigeon – because walls of city buildings are similar to 32

In fact, many urban animals are adapting with unusual 33

Recent research

- Emilie Snell-Rood studied small urbanised mammal specimens from museums in Minnesota.
 - She found the size of their 34 had increased.
 - She suggests this may be due to the need to locate new sources of 35 and to deal with new dangers.

Reading

Structure of the Reading Test



Duration of
test is 60 mins.



40 questions
for 40 marks.



3 sections in
this module.

- **Types of questions:**
- **Multiple choice**
- **Matching - Headings, Sentence Endings**
- **Identifying information - True, false and not Given**
- **Short Questions - One word answers, Three word answers**
- **Fill in the blanks - Diagram, Flow charts**

SECTION 1 Questions 1–14

Read the text below and answer Questions 1–7.

THE BEST SUITCASES

A Briggs and Riley Weekender

A weekend suitcase that's sophisticated and unusually spacious for its type. The strong nylon outer fabric is water and abrasion resistant, so it should handle any knocks without showing signs of damage.

B Mulberry Scotchgrain

Trimmed in brown leather, with gold details, this bag from the renowned fashion house is a truly indulgent buy. If you're investing this much in a suitcase then you'd better be planning an amazing holiday to go with it.

C Rimova Salsa

A design you can trust, this case is built from super light polycarbonate and is incredibly solid. The built-in combination lock offers state-of-the-art security so you can travel with peace of mind.

D Tripp Holiday

Simple and affordable, the Tripp range offers a great selection of tough cases. They also come in a huge range of cheerful colours that should go with anything you choose to put on, and you'll definitely be able to spot it on the luggage carousel at the airport.

E Eastpak Tranverz Holdall

For those who want something in between an annual holiday suitcase and a weekend bag, this is a fantastic compromise. With two wheels and a telescopic handle, the bag is guaranteed for 30 years. Did we mention it also comes in colourful leopard print?

F Herschel Parcel

From the brand behind some of today's most popular rucksacks, this suitcase really is a delight. Custom printed, with Herschel's signature leather toggles this well-crafted case is as cool, stylish and up to date as they come.

G The Diplomat

Travel in style with this beautiful suitcase that goes back to the days when trains ran on steam and air travel was leisurely. The leather case, part of the Steamline Luggage range, features roller wheels and a metal frame to hold it in shape.

16

Questions 1–7

Look at the seven reviews of suitcases, **A–G**, on page 16.

For which suitcase are the following statements true?

Write the correct letter, **A–G**, in boxes 1–7 on your answer sheet.

NB You may use any letter more than once.

- 1 This suitcase is for those who wish to purchase expensive luggage.
- 2 This suitcase is the right one for people who like to follow the latest fashion.
- 3 It is easy to choose one of these suitcases to match most clothing.
- 4 The manufacturer is confident that this suitcase will last a long time.
- 5 Items in this suitcase will not be affected if it gets wet.
- 6 This suitcase is of a useful, medium size.
- 7 Those who want to be reminded of an earlier age of travel will like this suitcase.

THE OXFORD SCHOOL OF DRAMA

One-Year Acting Course

This is an intensive course which is designed for those who have completed their academic studies and have some theatre or film experience already. In order to be accepted you should be a high achiever, knowledgeable about the industry and determined to succeed.

Term One: Technical classes in acting, voice, movement, applied movement and characterisation, music, singing, film, radio and professional development. The term finishes with an internal production given for tutors and students.

Term Two: All technical classes continue from term one. There is an internal performance of a one-act play, the recording of an audio showreel at a professional studio and the Showcase Drama in front of an invited audience including casting directors and agents.

Term Three: Technical classes continue with additional focus on audition technique, workshops and masterclasses. This term includes a public performance of a play outdoors in the grounds of Blenheim Palace, and the chance to act a short film recorded on location by a professional crew.

How to Apply

Entry to The Oxford School of Drama is by audition only and there are no academic requirements for any of our courses.

Once we have received your application form and audition fee, we will email you with a date for your audition and further details about what to expect when you are here.

For your initial audition, you will need to prepare two contrasting speeches from plays, lasting no longer than two minutes. There will also be some group work for which you will need to wear loose, comfortable clothing.

If you are applying from overseas, you will be able to submit your first audition by means of DVD, YouTube or link to a secure website. You will be invited to submit this once we have received your application form and audition fee. If you are successful in your first audition, you will be invited to attend future auditions here at the school. The school will provide a free bus from central Oxford for those attending auditions.

Questions 8–14

Do the following statements agree with the information given in the text on page 18?

In boxes 8–14 on your answer sheet, write

TRUE	<i>if the statement agrees with the information</i>
FALSE	<i>if the statement contradicts the information</i>
NOT GIVEN	<i>if there is no information on this</i>

- 8 Students can begin the one-year course without any previous involvement in acting.
- 9 Students will act in a performance in front of their classmates at the end of the first term.
- 10 Family members may attend a performance during the second term.
- 11 Students are required to make a film on their own in the last term of the course.
- 12 In their first audition, candidates perform speeches they have worked on in advance.
- 13 The Oxford School of Drama will send candidates details of local accommodation.
- 14 Overseas candidates can do all their auditions via a digital link.

SECTION 2 Questions 15–27

Read the text below and answer Questions 15–20.

BORDER CROSSING FOR COMMERCIAL VEHICLES

This Border Crossing Guide is designed for drivers and motor carriers operating commercial vehicles at Michigan's international border crossings. This information will help you cross the border from the US into Canada, and from Canada into the US.

Your first point of contact at the border consists of Primary Inspection. The best way to clear customs at Primary Inspection is to make sure Customs gets information about your shipment before you set off, using the Pre-Arrival Processing System (PAPS). When using this you need to provide information about your shipment, and you also need to send proof of a current annual inspection for your vehicle, tractor and trailer.

Before you arrive at the border, make sure you have all your paperwork up to date and ready to present at Primary Inspection. You'll need a photo ID in addition to your birth certificate or passport. Drivers must also turn on interior cab lights and open all interior drapes or blinds to sleeper areas for easy inspection.

If all of your paperwork is in order and was processed ahead of time, you will be released at the primary lane and this may be your only stop. If you are not a Canadian or US citizen, a visa is obligatory and you will also be required to complete an I-94 card. I-94 cards are available only at border crossings into the United States. Drivers who clear customs at Primary Inspection will be instructed to report to Immigration to fill out the I-94 card and receive verbal clearance from a US official to proceed into the United States. The charge for the I-94 card is \$6.

If your paperwork is not in order, you will be directed to Secondary Inspection. When you get there, look for the signs for Truck Inspection and follow these.

Questions 15–20

Complete the flow-chart below.

Choose **NO MORE THAN TWO WORDS** from the text for each answer.

Write your answers in boxes 15–20 on your answer sheet.

Procedure for border crossing

Before setting off

To speed up the border crossing, use PAPS.

For this, send your 15 details and current vehicle inspection documents.



Before arriving at the border

Check that documents such as 16 and birth certificate/passport are ready for inspection.

Make sure the 17 are on inside the vehicle.

Check that the 18 in the vehicle can be easily seen.



At the border (Primary Inspection)

This may be the only stop if paperwork is in order.

Non US/Canadian citizens must have a visa, and go to the 19 area to complete an I-94 card (there is a small 20 for this) and to receive verbal clearance.



At the border (Secondary Inspection)

If there is a problem with paperwork, you will be sent to Truck Inspection.

A visit to Oymyakon, the world's coldest town

- A** You don't need a sat nav to drive to Oymyakon. From Yakutsk you cross the Lena River and simply follow the M56 almost all of the way before taking a left at Tomtor for the final few kilometres. The journey takes two days of hard driving; two days of glistening landscapes, frozen rivers and untouched snow; two days of endless forest and breathtaking beauty; two days to penetrate the heart of Siberia and reach the coldest inhabited place on Earth. The beauty surprised me. Siberia isn't known for its pleasant appearance. It's always billed as a place of hardship. But for hour after hour, the wintry wonderland was bathed in a crisp, clean sunshine, presenting a continuous panorama of conifer trees wreathed in silence and snow.
- B** As we left the flat plain, the road began to twist and turn, leading us into untouched hills and on towards the Verkhoyansk Mountains. Beneath their snow-clad peaks, the slopes became steeper and the valleys deeper. Down in a valley, we stopped to look at a hot spring beside the road. It was immediately obvious against the snow – a spot shrouded in heavy mist. Trees emerged from the strange haze as ghostly silhouettes.
- C** Despite the magical ambience of the Siberian wilderness, its reputation for hardship hit me every time I climbed out of the vehicle. Within less than a minute, the skin all over my face began to feel as if it were burning. If I wasn't wearing my two sets of gloves, I rapidly lost the feeling in my fingertips. I learned very quickly not to draw too deep a breath because the shock of the cold air in my lungs invariably set me off on an extended bout of coughing. Siberia in winter is a world barely fit for human habitation. This is a place of such searing cold that it bites through multiple layers of clothing as if they aren't there.
- D** Oymyakon is a quiet little town – the world's coldest – of about 550 inhabitants, with its own power station, a school, two shops and a small hospital. It probably originated as a seasonal settlement where reindeer herders spent the summer on the banks of the Indigirka River.
- E** The temperature when I arrived was -45°C – not particularly cold, I was informed. A number of factors combine to explain Oymyakon's record low temperatures. It is far from the ocean, with its moderating effect on air temperature. In addition, the town sits in a valley, below the general level of the Oymyakon Plateau, which, in turn, is enclosed on all sides by mountains up to 2,000 metres in height. As the cold air sinks, it accumulates in the valley, with little wind to disturb it. Oymyakon's average temperature in January is -50°C . Lower temperatures have been recorded in Antarctica, but there are no permanent inhabitants there.

Questions 28–36

The text on pages 25 and 26 has nine paragraphs, A–I.

Choose the correct heading for each paragraph from the list of headings below.

Write the correct number, *i–xi*, in boxes 28–36 on your answer sheet.

List of Headings

- i Various sources of supplies
- ii The effects of going outside
- iii Oymyakon past and present
- iv A contrast in the landscape
- v Animals that can survive the cold
- vi How Oymyakon is affected by its location
- vii Keeping out the cold
- viii Not the only challenging time of the year
- ix Better than its reputation
- x Very few facilities in buildings
- xi More snow than anywhere else in the world

- 28 Paragraph A
- 29 Paragraph B
- 30 Paragraph C
- 31 Paragraph D
- 32 Paragraph E
- 33 Paragraph F
- 34 Paragraph G
- 35 Paragraph H
- 36 Paragraph I

A visit to Oymyakon, the world's coldest town

- A** You don't need a sat nav to drive to Oymyakon. From Yakutsk you cross the Lena River and simply follow the M56 almost all of the way before taking a left at Tomtor for the final few kilometres. The journey takes two days of hard driving; two days of glistening landscapes, frozen rivers and untouched snow; two days of endless forest and breathtaking beauty; two days to penetrate the heart of Siberia and reach the coldest inhabited place on Earth. The beauty surprised me. Siberia isn't known for its pleasant appearance. It's always billed as a place of hardship. But for hour after hour, the wintry wonderland was bathed in a crisp, clean sunshine, presenting a continuous panorama of conifer trees wreathed in silence and snow.
- B** As we left the flat plain, the road began to twist and turn, leading us into untouched hills and on towards the Verkhoyansk Mountains. Beneath their snow-clad peaks, the slopes became steeper and the valleys deeper. Down in a valley, we stopped to look at a hot spring beside the road. It was immediately obvious against the snow – a spot shrouded in heavy mist. Trees emerged from the strange haze as ghostly silhouettes.
- C** Despite the magical ambience of the Siberian wilderness, its reputation for hardship hit me every time I climbed out of the vehicle. Within less than a minute, the skin all over my face began to feel as if it were burning. If I wasn't wearing my two sets of gloves, I rapidly lost the feeling in my fingertips. I learned very quickly not to draw too deep a breath because the shock of the cold air in my lungs invariably set me off on an extended bout of coughing. Siberia in winter is a world barely fit for human habitation. This is a place of such searing cold that it bites through multiple layers of clothing as if they aren't there.
- D** Oymyakon is a quiet little town – the world's coldest – of about 550 inhabitants, with its own power station, a school, two shops and a small hospital. It probably originated as a seasonal settlement where reindeer herders spent the summer on the banks of the Indigirka River.
- E** The temperature when I arrived was -45°C – not particularly cold, I was informed. A number of factors combine to explain Oymyakon's record low temperatures. It is far from the ocean, with its moderating effect on air temperature. In addition, the town sits in a valley, below the general level of the Oymyakon Plateau, which, in turn, is enclosed on all sides by mountains up to 2,000 metres in height. As the cold air sinks, it accumulates in the valley, with little wind to disturb it. Oymyakon's average temperature in January is -50°C . Lower temperatures have been recorded in Antarctica, but there are no permanent inhabitants there.

Questions 37-40

Complete the summary below.

Choose ONE WORD ONLY from the text for each answer.

Write your answers in boxes 37-40 on your answer sheet.

Why Oymyakon gets so cold

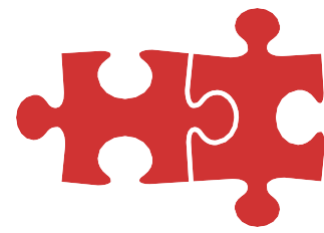
Oymyakon is a long way from any 37 which would prevent the temperature from falling so low. The town is located in a 38 within a plateau surrounded by 39 . Because there is not much 40 cold air collects in the town.

Writing

Structure of the writing Test

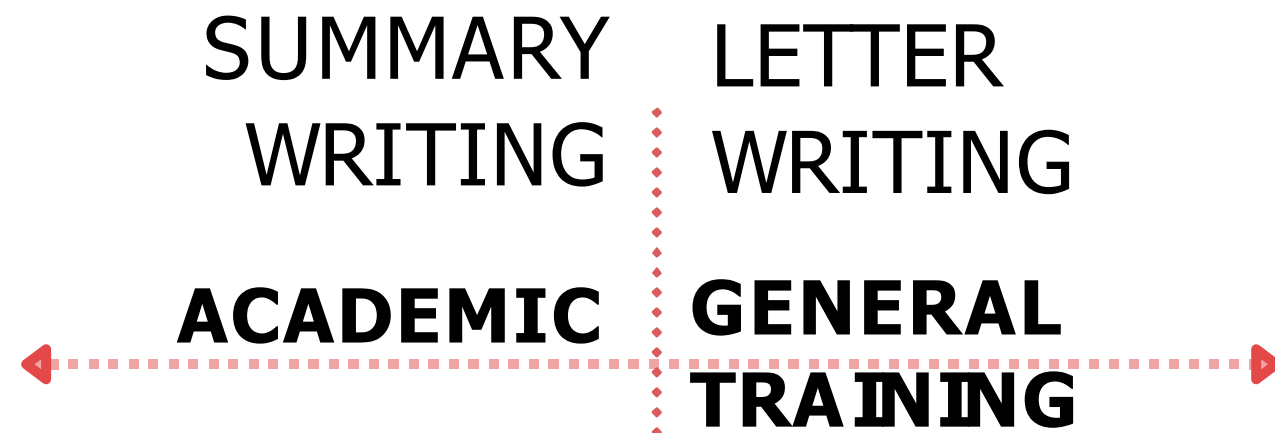


Duration of
test is 60 mins.



2 sections with
one task each

Task 1



Suggested Time: **20 mins**
Minimum number of words: **150 words**

Task 2

ESSAY
WRITING

Suggested Time: **40 mins**
Minimum number of words: **250 words**

Marking Criteria

The Test takers/examiners use the assessment criteria to award a band score for each of the four criteria:

- Task Achievement/ Response - 25%
- Coherence and Cohesion -25%
- Lexical Resource-25%
- Grammatical range and Accuracy-25%

Task 1 - Academic

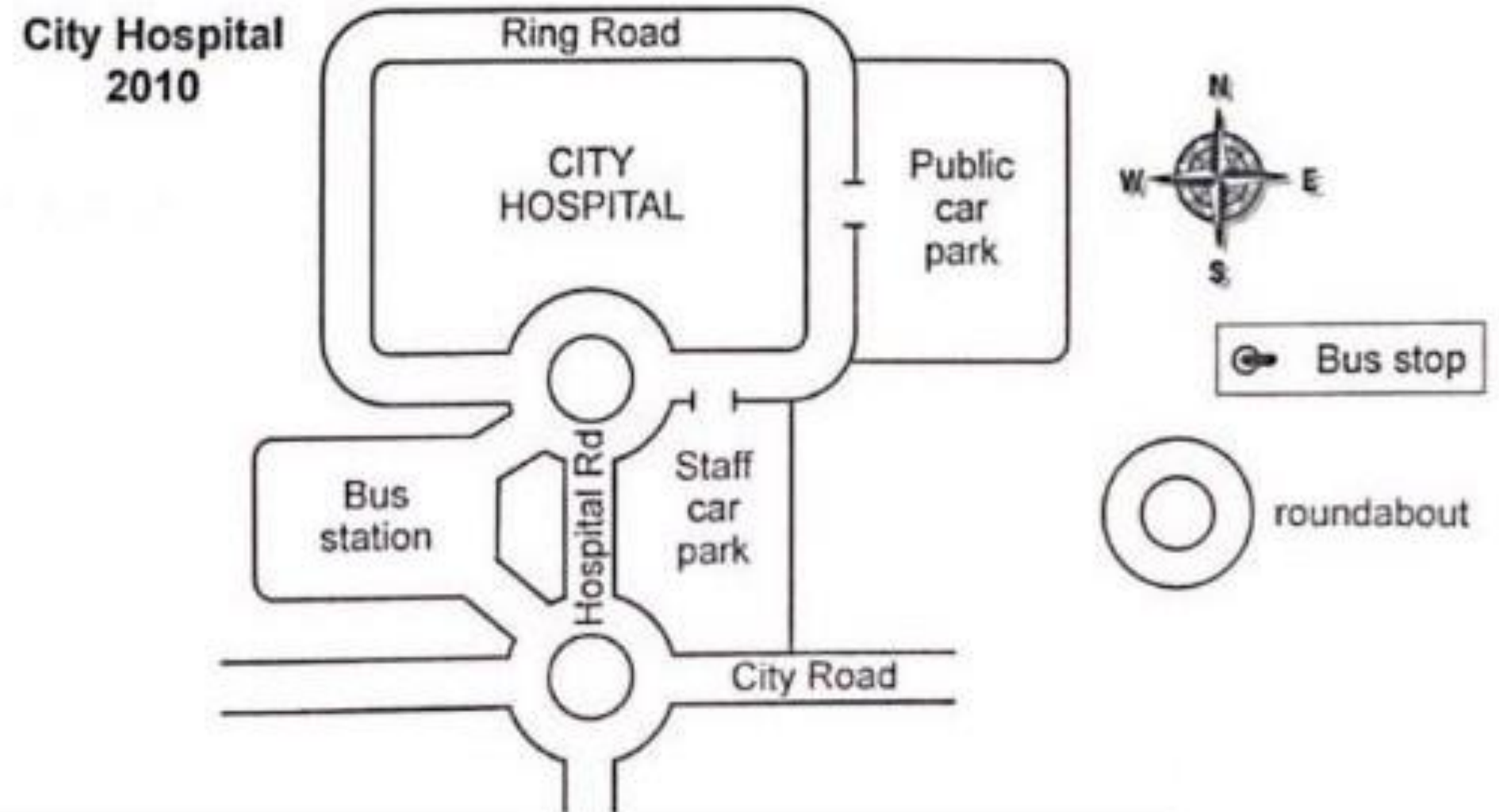
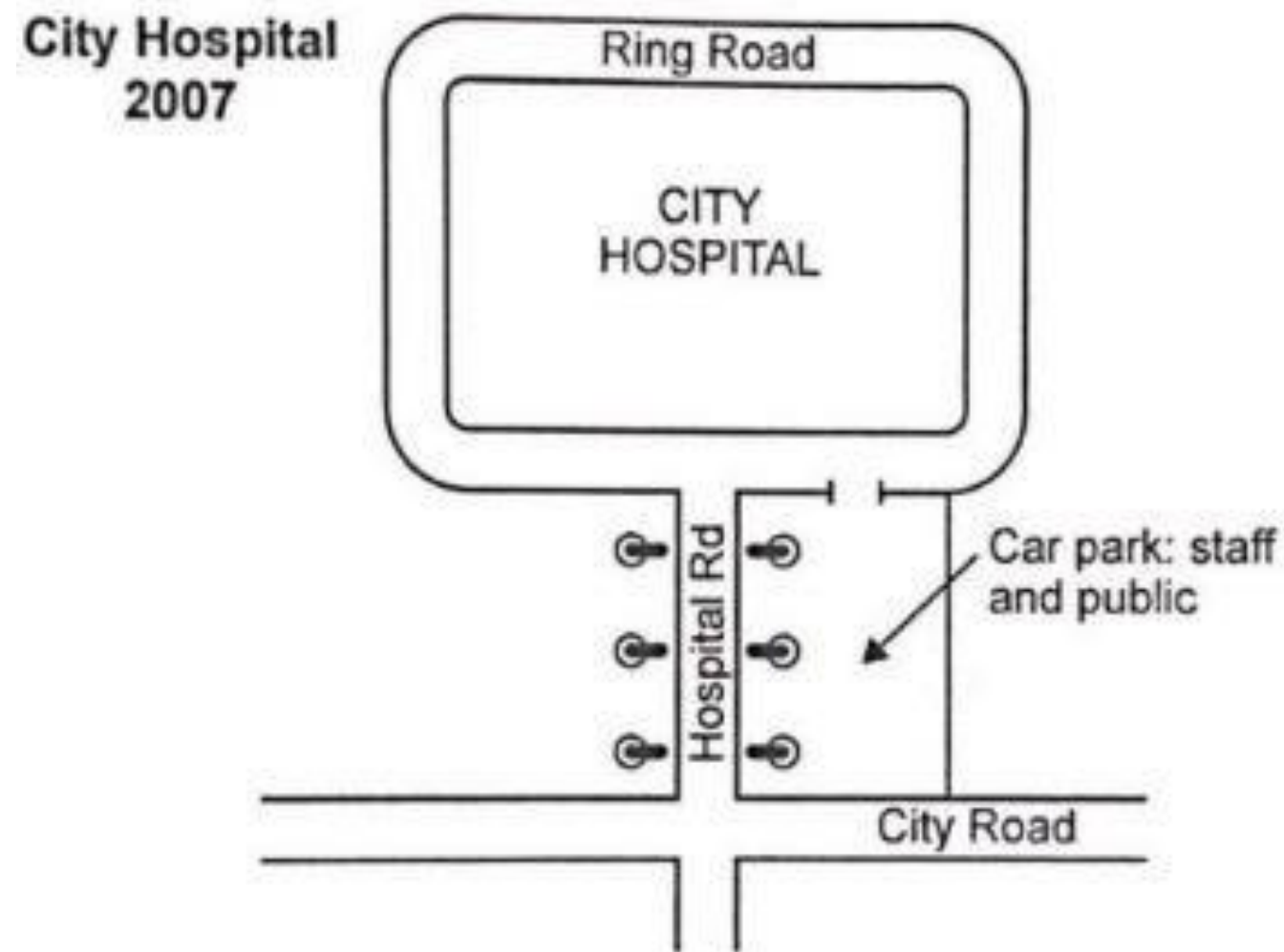
A candidate requires to analyse information from a bar graph, Line graph, Pie chart, process diagram, table chart or map and write a summary highlighting all relevant observations.

Example - Map

The two maps below show road access to a city hospital in 2007 and 2010.

Summarize the information by selecting and reporting the main features, and make comparisons where relevant.

Write at least 150 words

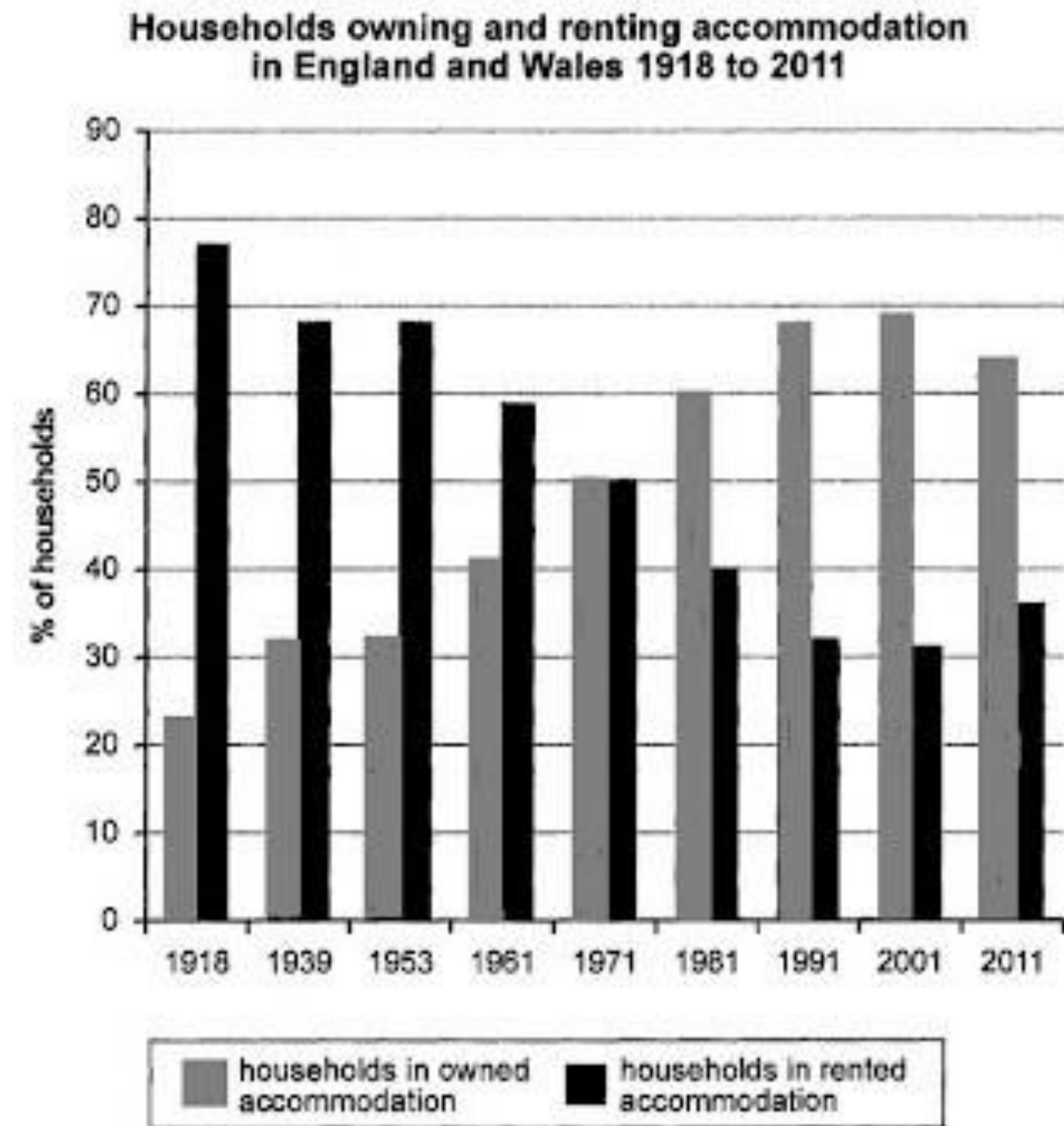


Example - Bar Graph

The chart below shows the percentage of households in owned and rented accommodation in England and Wales between 1918 and 2011.

Summarise the information by selecting and reporting the main features, and make comparisons where relevant.

Write at least 150 words.

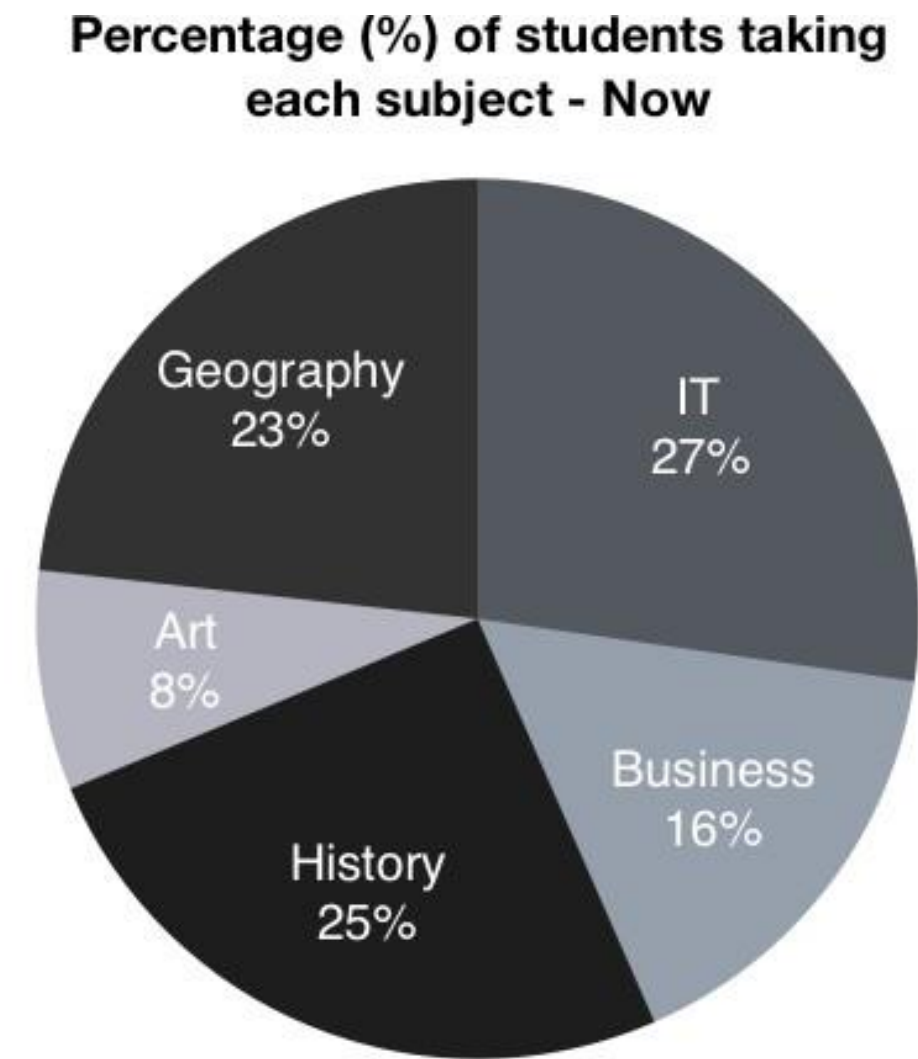
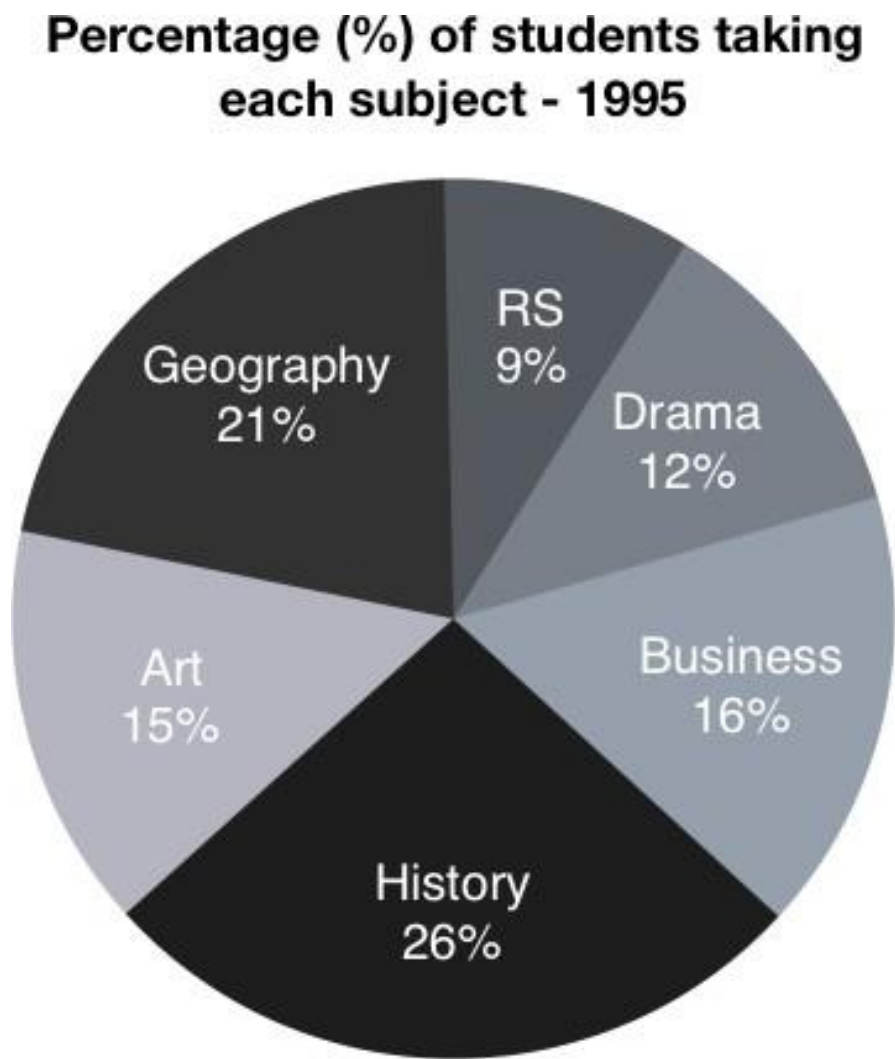


Example - Pie Chart

The chart below shows the percentage of secondary school students in the UK taking different subjects in 1995 and this year.

Summarise the information by selecting and reporting the main features, and make comparisons where relevant.

Write at least 150 words.



Task 1 - General training

A candidate has to **write a letter** in response to an everyday situation or problem.

This letter could be **formal, semi-formal** or **personal/ casual**.

Example

You ordered electronic equipment from an online store which has arrived damaged.

Write a letter to the manager of the store/ retailer to complain about the electronic equipment you bought. In your letter

- Explain why you are unhappy
- Request a refund/exchange
- Make arrangements for the refund/ return.

Write at least 150 words.

You do NOT need to write any addresses.

Begin your letter as follows:

Dear Sir or Madam,

Phrases that can be used in this letter:

- I am not happy about
- I am writing to express my dissatisfaction
- I am unhappy about the product
- I am writing to express my annoyance
- I am writing to complain about

Expressing concern

- I am writing to express my concern about...
- I was very sorry to learn that...
- I was really sorry to hear that...

Closing

- I look forward to hearing from you,
- I look forward to seeing you,
- I look forward to meeting you

Task 2 - Essay Writing

Candidates are presented with a point of view, argument or problem.

They are assessed on their ability to **present a solution to the problem**, their ability to write in an appropriate style, **present and justify an opinion** and write an essay. These could be:

1. Agree or disagree
2. Discussion questions
3. Advantage & disadvantage
4. Cause and solutions
5. Double question with personal view

Example

1) Nowadays the way people interact with each other has changed because of technology. In what ways has technology affected the types of relationships people have?

Has this become a positive or negative development?

2) Many people believe that social networking sites have a huge impact on millennials and society.

To what extent do you agree or disagree?

WRITING TASK 2

You should spend about 40 minutes on this task.

Write about the following topic:

Living in a country where you have to speak a foreign language can cause serious social problems, as well as practical problems.

To what extent do you agree or disagree with this statement?

Give reasons for your answer and include any relevant examples from your own knowledge or experience.

Write at least 250 words.

IELTS TASK 2 Writing band descriptors (public version)

Band	Task Response	Coherence and Cohesion	Lexical Resource	Grammatical Range and Accuracy
9	<ul style="list-style-type: none"> fully addresses all parts of the task presents a fully developed position in answer to the question with relevant, fully extended and well supported ideas 	<ul style="list-style-type: none"> uses cohesion in such a way that it attracts no attention skilfully manages paragraphing 	<ul style="list-style-type: none"> uses a wide range of vocabulary with very natural and sophisticated control of lexical features; rare minor errors occur only as 'slips' 	<ul style="list-style-type: none"> uses a wide range of structures with full flexibility and accuracy; rare minor errors occur only as 'slips'
8	<ul style="list-style-type: none"> sufficiently addresses all parts of the task presents a well-developed response to the question with relevant, extended and supported ideas 	<ul style="list-style-type: none"> sequences information and ideas logically manages all aspects of cohesion well uses paragraphing sufficiently and appropriately 	<ul style="list-style-type: none"> uses a wide range of vocabulary fluently and flexibly to convey precise meanings skilfully uses uncommon lexical items but there may be occasional inaccuracies in word choice and collocation produces rare errors in spelling and/or word formation 	<ul style="list-style-type: none"> uses a wide range of structures the majority of sentences are error-free makes only very occasional errors or inappropriacies
7	<ul style="list-style-type: none"> addresses all parts of the task presents a clear position throughout the response presents, extends and supports main ideas, but there may be a tendency to overgeneralise and/or supporting ideas may lack focus 	<ul style="list-style-type: none"> logically organises information and ideas; there is clear progression throughout uses a range of cohesive devices appropriately although there may be some under-/over-use presents a clear central topic within each paragraph 	<ul style="list-style-type: none"> uses a sufficient range of vocabulary to allow some flexibility and precision uses less common lexical items with some awareness of style and collocation may produce occasional errors in word choice, spelling and/or word formation 	<ul style="list-style-type: none"> uses a variety of complex structures produces frequent error-free sentences has good control of grammar and punctuation but may make a few errors
6	<ul style="list-style-type: none"> addresses all parts of the task although some parts may be more fully covered than others presents a relevant position although the conclusions may become unclear or repetitive presents relevant main ideas but some may be inadequately developed/unclear 	<ul style="list-style-type: none"> arranges information and ideas coherently and there is a clear overall progression uses cohesive devices effectively, but cohesion within and/or between sentences may be faulty or mechanical may not always use referencing clearly or appropriately uses paragraphing, but not always logically 	<ul style="list-style-type: none"> uses an adequate range of vocabulary for the task attempts to use less common vocabulary but with some inaccuracy makes some errors in spelling and/or word formation, but they do not impede communication 	<ul style="list-style-type: none"> uses a mix of simple and complex sentence forms makes some errors in grammar and punctuation but they rarely reduce communication

Speaking

Structure of the Speaking Test



Duration of test
is 11-14 mins.



Interview
format



Divided over
3 parts

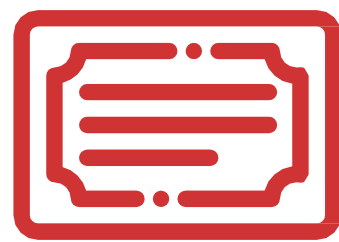


Entire session
is recorded



Part 1

Introduction
4-5 mins



Part 2

Cue Card
3-4 mins



Part 3

Discussion
4-5 mins

Assessment criteria

Fluency	Talking at length Talking without pauses or hesitations Talking without self-correction Able to be understood Using linking devices
Lexical Resource	Using a range of words & paraphrasing Using collocations www.ieltsliz.com Using less common vocabulary Avoiding errors
Grammar Range & Accuracy	Using a range of sentence structures Using a range of grammar tenses Avoiding errors
Pronunciation	Able to be understood throughout the test Able to use intonation Accent does not affect understanding Accurate word and sound pronunciation

Example

Part 1

- What is your name?
- How may I address you?
- May I see your id?
- Tell me something about your hometown.
- What is the view from your bedroom window?
- Talk about a car trip.
- How do you spend your weekend?
- How often you see yourself in mirror?

Example

Part 2

Describe an interesting song

You should say:

- What the song is?
- What is it about?
- Whether the song is popular?
- Explain why you think is interesting?

Example

Part 3

- Why many music competitions are popular in India
- Do youngsters and elders enjoy same kind of music? (justify)
- What are the factors that make people like a song?
- On what occasions people in your country sing together
- Which kind of songs are suitable for children? why?



**Thank you for
joining today's class.**

IF YOU HAVE ANY QUESTIONS,
FEEL FREE TO ASK

THANKS